

# GP5512FF

PN: BTVACETEPTHFFCN01B  
EAN: 6422956010133

## Specifications

Battery Model	GP5512FF
Voltage	12V
Power (1,65V/cell@15 min)	167.80W/Cell
Type	VRLA - maintenance free
Designed Floating Life	3~5 years
Nominal Operating Temp. Range	25°C ± 3°C
Terminal	T6
<b>Construction</b>	
Container & Cover	ABS
Safety valve	Rubber
Terminal	Copper
Internal Resistance	Full charged at 25°C ≤ 7.5mΩ
Self Discharge (20°C)	2% of capacity declined per month
<b>Capacity affected by temperature</b>	
40°C	103%
25°C	100%
0°C	86%
<b>Charge Voltage (25°C)</b>	
Cycle use	14.4V - 15.0V (-30mV/°C), max. Current: 16.5A
Float use	13.5V - 13.8V (-20mV/°C)
<b>Physical</b>	
Without Terminal	230 x 138 x 210 mm
With Terminal	230 x 138 x 210mm
Product Weight	15.1 Kg



Completely sealed and maintenance-free



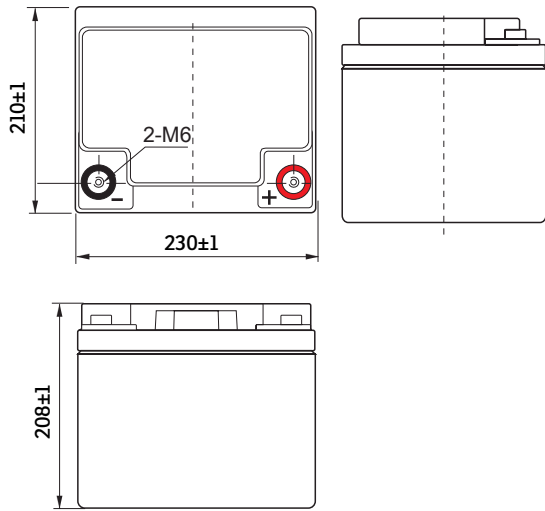
Excellent charging and re-charging



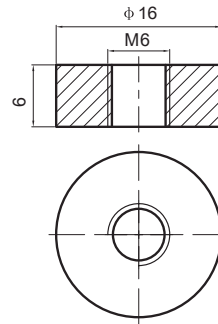
Floating & standby use: 3-5 years

- Small size battery
- Excellent charging and re-charging
- Stable and reliable for long-term
- Low self-discharge
- Floating & standby use: 3-5 years
- More than 260 cycles at 100% DOD
- Multiple Application: Alarm and Security Systems, Cable Television, Communication Equipment, Power Tools, Control Equipment, Medical Equipment, UPS, Toys

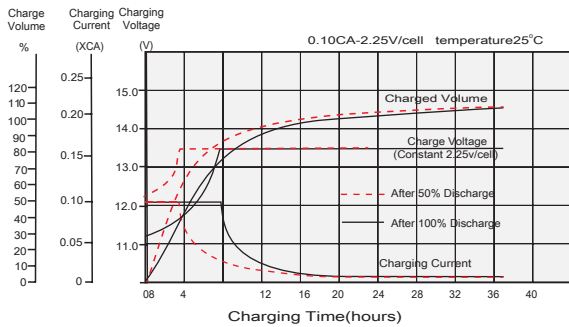
## Dimensions (mm)



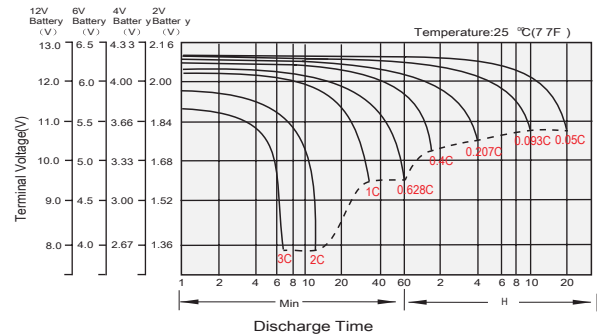
## T6 Terminal Dimensions (mm)



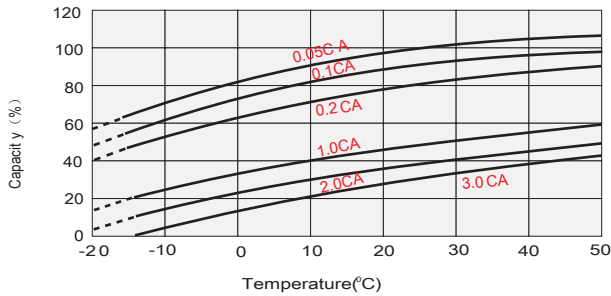
## Float Charging Characteristics



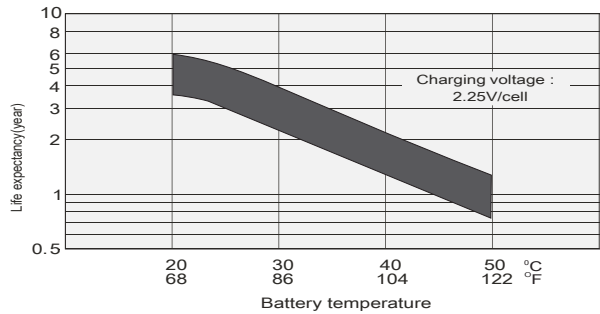
## Discharge Characteristics



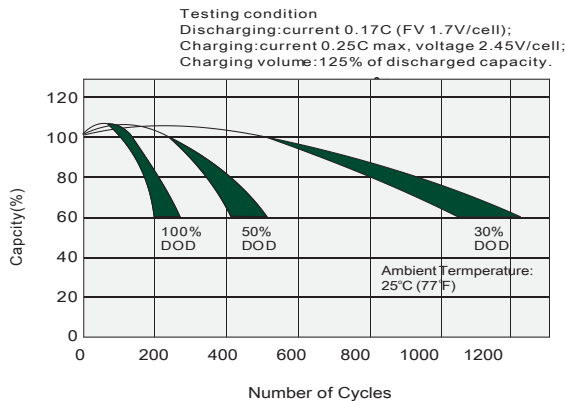
## Temperature Effects in Relation to Battery Capacity



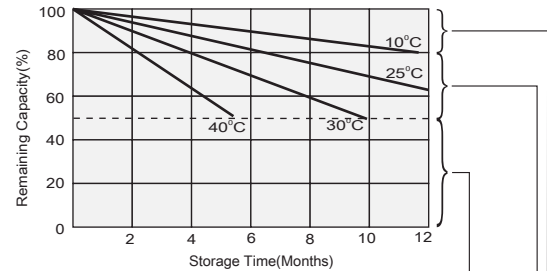
## Effect of Temperature on Long Term Float Life



## Cycle Life in Relation to Depth of Discharge



## Self Discharge Characteristics



Supplemental charge may often fail to recover the capacity. The battery should never be left standing until this is reached.

Supplemental charge required before use. Optional charging ways as below:  
 1. Charged for above 3 days at limited current 0.25CA and constant voltage 2.25V/cell.  
 2. Charged for above 20 hours at limited current 0.25CA and constant voltage 2.45V/cell.  
 3. Charged for 8-10 hours at limited current 0.05CA.

No supplemental charge required  
 (Carry out supplemental charge before use if 100% capacity is required.)





## Constant Current Discharge Characteristics (A), 25°C

F.V/Ti	5min	10min	15min	20min	30min	1Hr	2Hr	3Hr	4Hr	5Hr	6Hr	8Hr	10Hr	20Hr
1.85V/cell	94.1	74.0	62.9	52.6	41.8	25.9	16.5	13.1	10.7	8.60	7.49	6.08	5.19	2.83
1.80V/cell	126.4	94.6	76.0	62.2	49.4	29.0	18.0	14.1	11.4	9.23	8.03	6.45	5.50	2.86
1.75V/cell	142.5	103.9	83.1	66.9	51.3	30.4	18.7	14.3	11.6	9.46	8.25	6.56	5.56	2.89
1.70V/cell	156.9	113.3	88.7	70.4	53.3	31.3	19.4	14.7	11.9	9.71	8.42	6.65	5.61	2.94
1.65V/cell	173.0	122.2	94.3	74.7	56.3	32.4	20.0	15.3	12.4	9.98	8.61	6.75	5.73	2.98
1.60V/cell	190.8	132.7	100.8	79.6	59.4	33.6	20.7	15.8	12.7	10.3	8.79	6.82	5.79	3.00



## Constant Wattage Discharge Characteristics (W), 25°C

F.V/Ti	5min	10min	15min	20min	30min	1Hr	2Hr	3Hr	4Hr	5Hr	6Hr	8Hr	10Hr	20Hr
1.85V/cell	172.1	136.7	117.4	99.2	79.7	50.0	32.1	25.5	20.9	16.9	14.7	12.0	10.3	5.61
1.80V/cell	228.6	172.6	140.0	115.6	92.7	55.7	34.8	27.2	22.2	18.0	15.7	12.7	10.9	5.66
1.75V/cell	252.2	186.6	151.0	123.1	95.4	58.0	35.9	27.6	22.6	18.4	16.1	12.9	11.0	5.70
1.70V/cell	270.0	198.8	159.0	128.4	98.7	59.7	37.3	28.4	23.1	18.9	16.4	13.0	11.1	5.81
1.65V/cell	293.6	212.6	167.8	135.4	103.3	61.2	38.1	29.4	23.8	19.3	16.7	13.2	11.3	5.88
1.60V/cell	316.3	225.5	176.5	142.7	108.3	63.1	39.2	30.2	24.5	19.9	17.0	13.3	11.4	5.90



## Logistics

	Carton Box Size	242 x 148 x 248 mm
	Pieces in the Carton Box	1 pc / ctn
	Net & Gross weight / CTN	N.W. / G.W.: 15.1 kg / 15.4 kg



## Certificates

