

GP1812CF

PN: BTVACATHETHCFCN01B
EAN: 6422956010164

Specifications

Battery Model	GP1812CF
Voltage	12V
Power (1,65V/cell@15 min)	57.50W/cell
Type	VRLA - maintenance free
Designed Floating Life	3~5 years
Nominal Operating Temp. Range	25°C ± 3°C
Terminal	T3
Construction	
Container & Cover	ABS
Safety valve	Rubber
Terminal	Copper
Internal Resistance	Full charged at 25°C ≤ 16mΩ
Self Discharge (20°C)	2% of capacity declined per month
Capacity affected by temperature	
40°C	103%
25°C	100%
0°C	86%
Charge Voltage (25°C)	
Cycle use	14.4V - 15.0V (-30mV/°C), max. Current: 5.4A
Float use	13.5V - 13.8V (-20mV/°C)
Physical	
Without Terminal	181 x 77 x 167 mm
With Terminal	181 x 77 x 167 mm
Product Weight	5 Kg



Completely sealed and maintenance-free



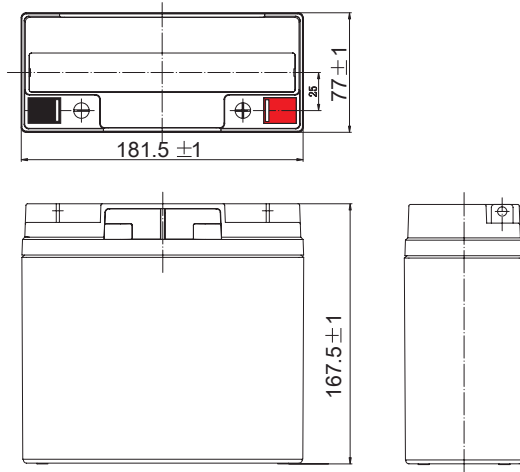
Excellent charging and re-charging



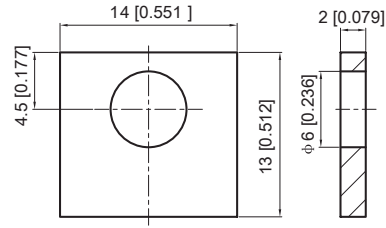
Floating & standby use: 3-5 years

- Small size battery
- Excellent charging and re-charging
- Stable and reliable for long-term
- Low self-discharge
- Floating & standby use: 3-5 years
- More than 260 cycles at 100% DOD
- Multiple Application: Alarm and Security Systems, Cable Television, Communication Equipment, Power Tools, Control Equipment, Medical Equipment, UPS, Toys

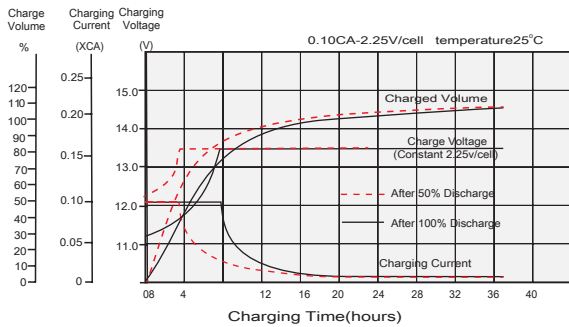
Dimensions (mm)



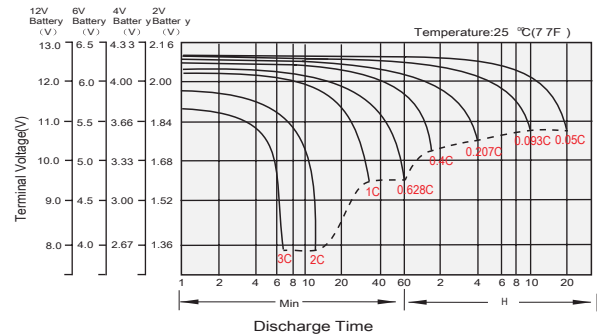
T3 Terminal Dimensions (mm)



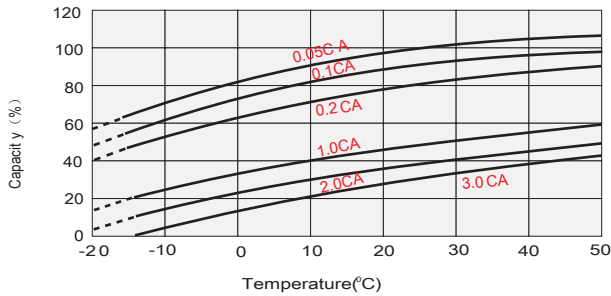
Float Charging Characteristics



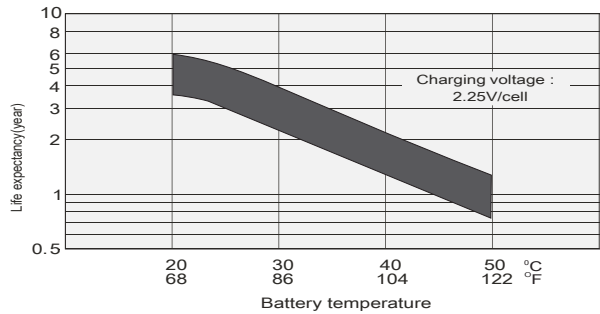
Discharge Characteristics



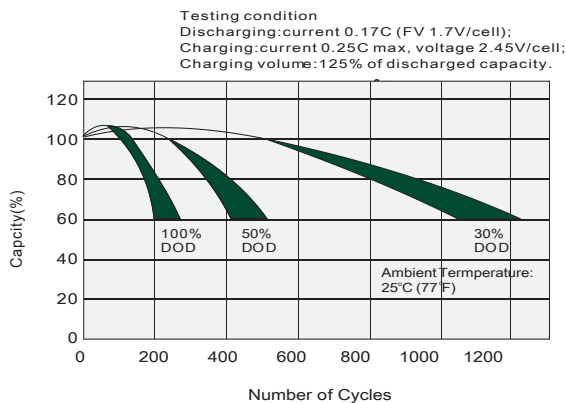
Temperature Effects in Relation to Battery Capacity



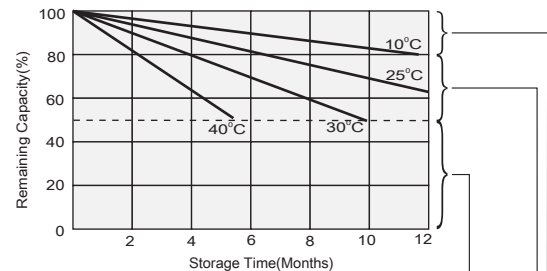
Effect of Temperature on Long Term Float Life



Cycle Life in Relation to Depth of Discharge



Self Discharge Characteristics



Supplementary charge may often fail to recover the capacity. The battery should never be left standing until this is reached.

Supplementary charge required before use. Optimal charging way as below:
1. Charged for above 3 days at limited current 0.25CA and constant voltage 2.25V/cell.
2. Charged for above 20 hours at limited current 0.25CA and constant voltage 2.45V/cell.
3. Charged for 8-10 hours at limited current 0.05CA.

No supplementary charge required
(Carry out supplementary charge before use if 100% capacity is required.)





Constant Current Discharge Characteristics (A), 25°C

F.V/Ti	5min	10min	15min	20min	30min	1Hr	2Hr	3Hr	4Hr	5Hr	6Hr	8Hr	10Hr	20Hr
1.85V/cell	33.9	25.6	22.7	19.9	15.3	9.11	5.51	4.13	3.35	2.84	2.47	1.96	1.63	0.884
1.80V/cell	40.8	30.2	25.9	22.1	16.7	9.79	5.85	4.34	3.51	2.94	2.55	2.02	1.67	0.900
1.75V/cell	45.8	33.0	27.8	23.4	17.4	10.2	6.07	4.49	3.60	3.03	2.62	2.06	1.70	0.918
1.70V/cell	49.9	35.4	29.7	24.7	18.1	10.6	6.27	4.63	3.69	3.09	2.67	2.09	1.72	0.929
1.65V/cell	53.8	37.7	31.1	25.8	18.9	10.9	6.44	4.73	3.77	3.14	2.71	2.12	1.74	0.938
1.60V/cell	57.9	39.6	31.9	26.4	19.3	11.1	6.59	4.82	3.84	3.20	2.74	2.15	1.76	0.945



Constant Wattage Discharge Characteristics (W), 25°C

F.V/Ti	5min	10min	15min	20min	30min	1Hr	2Hr	3Hr	4Hr	5Hr	6Hr	8Hr	10Hr	20Hr
1.85V/cell	64.0	48.8	43.6	38.5	29.8	17.9	10.9	8.21	6.68	5.68	4.95	3.95	3.29	1.79
1.80V/cell	76.3	57.2	49.5	42.7	32.4	19.2	11.5	8.59	6.98	5.86	5.09	4.04	3.36	1.81
1.75V/cell	84.8	62.0	52.8	44.8	33.6	20.0	11.9	8.87	7.14	6.02	5.21	4.11	3.39	1.82
1.70V/cell	91.1	65.6	55.7	46.8	34.7	20.6	12.2	9.06	7.25	6.08	5.27	4.15	3.42	1.83
1.65V/cell	96.6	68.8	57.5	48.4	35.8	21.0	12.5	9.19	7.35	6.15	5.32	4.18	3.43	1.84
1.60V/cell	101.5	70.8	58.0	48.7	36.0	21.3	12.7	9.31	7.45	6.22	5.33	4.21	3.45	1.85



Logistics

	Carton Box Size	325 x 188 x 188 mm
	Pieces in the Carton Box	4 pc / ctn
	Net & Gross weight / CTN	N.W. / G.W.: 20 kg / 20.5 kg



Certificates

